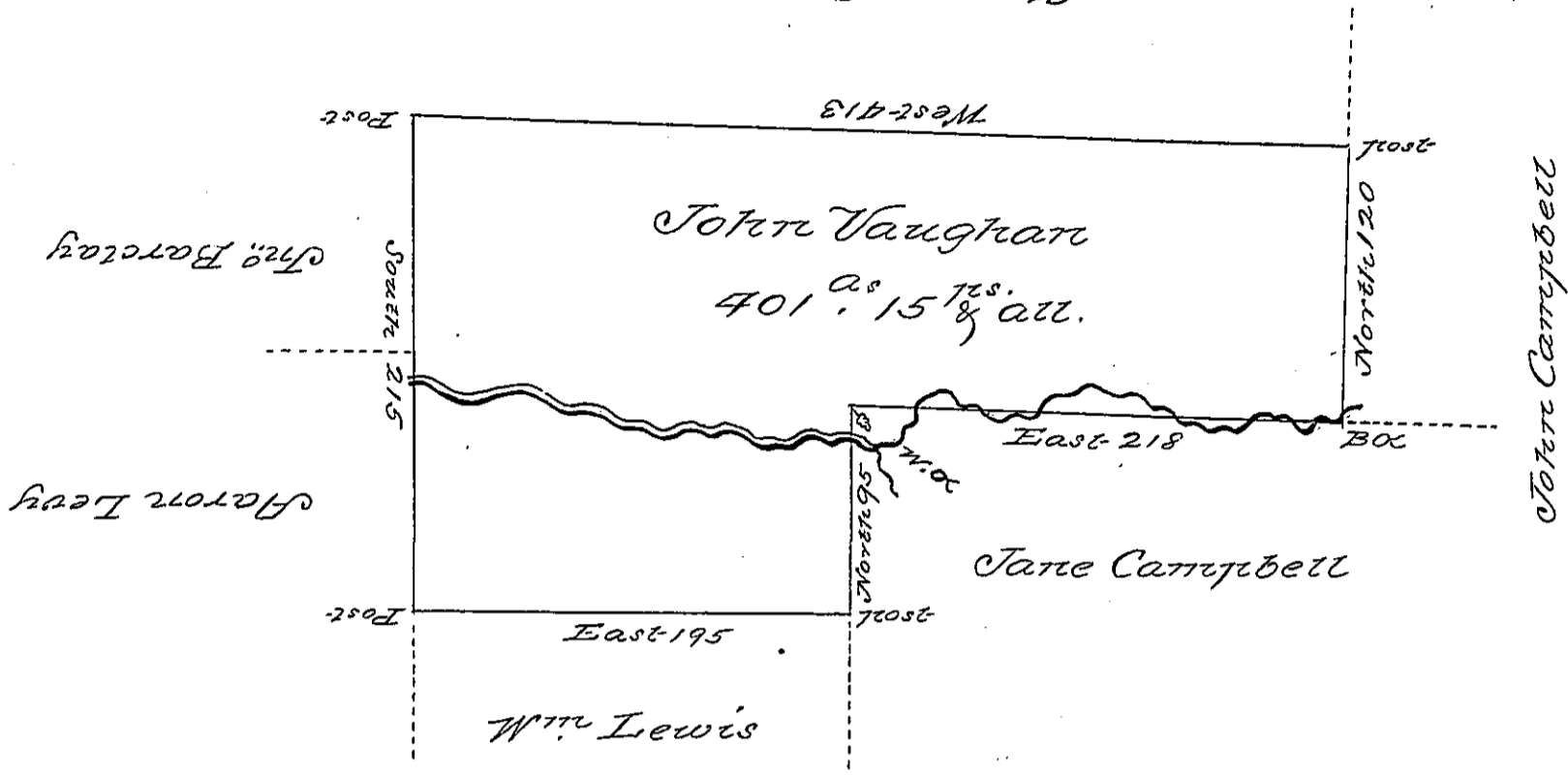


C 222-219

Charles Stewart



Situate on a Small Branch of Clearfield Creek call'd  
 Spruce Run in Huntingdon County containing 401<sup>as</sup>  
 15<sup>1/2</sup> and the usuall allowance for Roads  
 Surveyed the 17<sup>th</sup> Day of June 1790<sup>1793</sup> in persu-  
ance of a Warrant Dated ~~the 27<sup>th</sup> Day of July 1792~~  
 The 3<sup>d</sup>. Day of August 1793\*

John Canan D. S.  
 Daniel Brodhead Esq. J. J.  
 \* Say 27. July, 1792. See Main Book B. of P. N. 99. 501.

IN TESTIMONY that the above is a copy of the original remaining on file in the  
 Department of Internal Affairs of Pennsylvania, made con-  
 formably to an Act of Assembly approved the 16th day of  
 February, 1833, I have hereunto set my Hand and caused  
 the Seal of said Department to be affixed at Harrisburg, this

Second day of November 1897

James W. Pitta  
 Secretary of Internal Affairs.